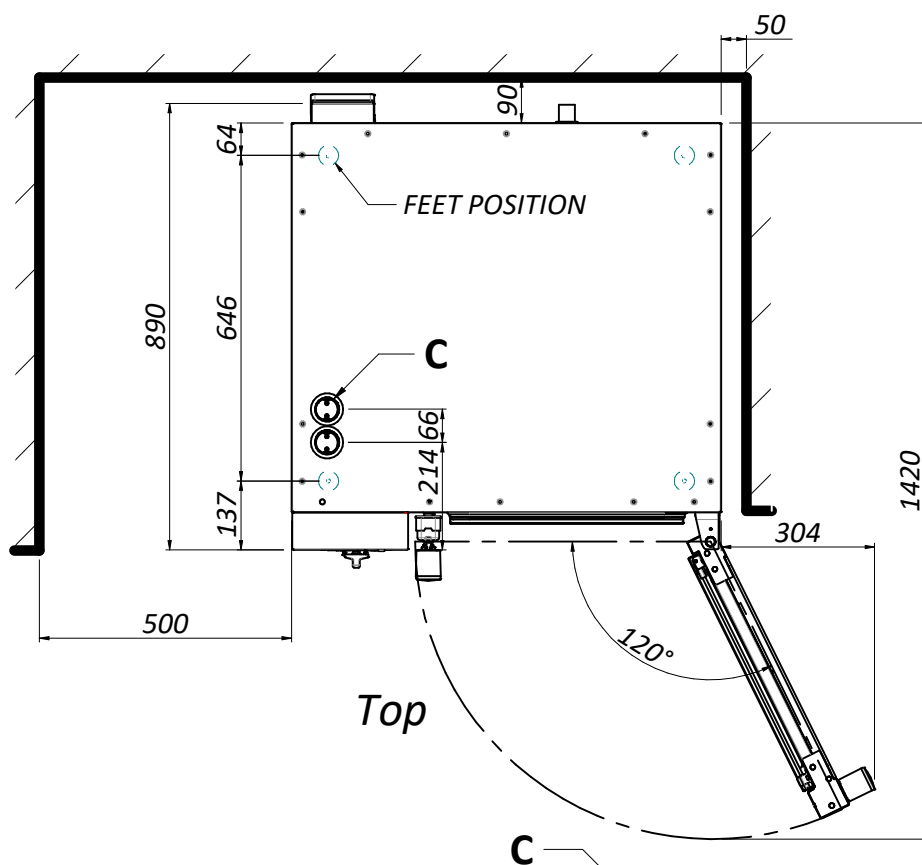
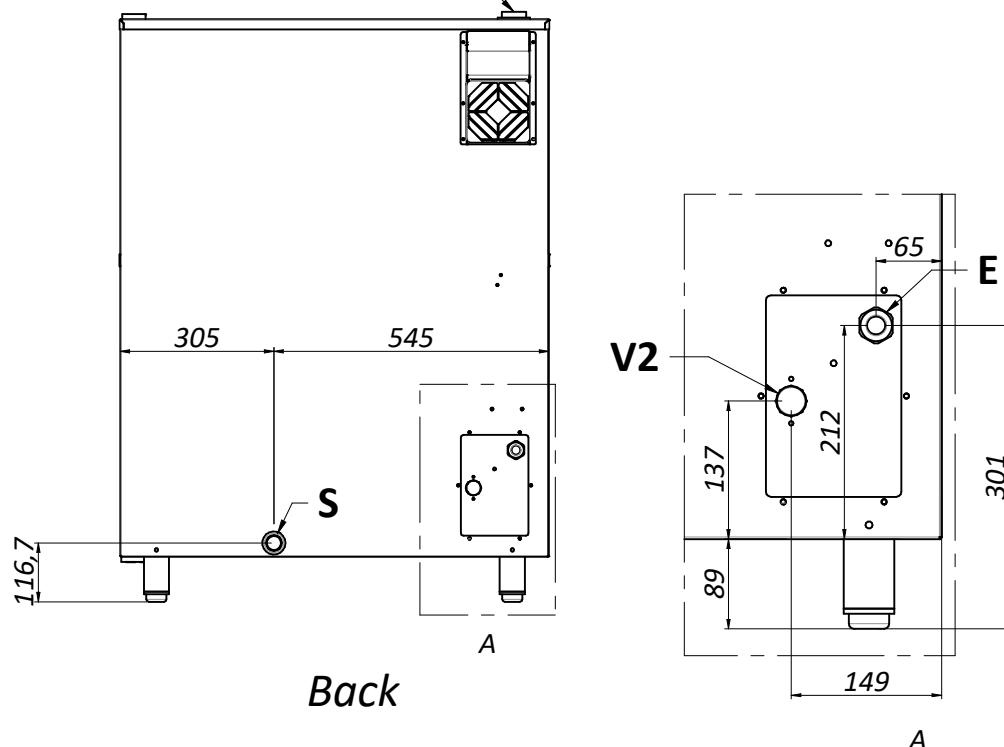


Front



Top



Back

- C: Steam outlet chimney / Air inlet chimney
- V2: Steam solenoid valve
- H: Hood connection
- E: Electric connection
- S: Drain water

Dimensions and weight

Oven width: 850 mm
Oven depth: 890 mm
Oven height: 1170 mm
Net weight full optional: 125 Kg

Packaging width: 915 mm
Package depth: 1000 mm
Packaging height: 1330 mm
Weight with packaging full optional: 145 Kg
Packaging volume: 1.22 m³

Installation

Minimum left side distance: 500 mm
Minimum right side distance: 50 mm
Minimum back distance: 50 mm
Min. distance from heat sources: 500 mm

Electrical connection

Supply: 380-415 V 3N 50/60 Hz
230 V 3P 50/60 Hz

Max power: 17 Kw
Current: 28 A
49 A

Cable: 5x4 mm²
H07RN-F

Water connection

Water wash connection V1: 3/4"
Steam water connection V2: 3/4" Softner
Water pressure: 1.5-5 bar
Water hardness: 4° d
Minimum Condutance: 50 µS/cm
Exhaust size S: 32 mm

Capacity

Trays type: 6040
Number of trays: 10

Distance between trays: 80mm

Max load: 45kg
Max load single tray: 5kg

IP rating: IPx4

Distributor:

KiD Catering Equipment, Oaktree Court Business Centre, Mill Lane, Ness, Cheshire, CH64 8TP
Tel: 0333 123 2450
sales@kidcateringequipment.com