



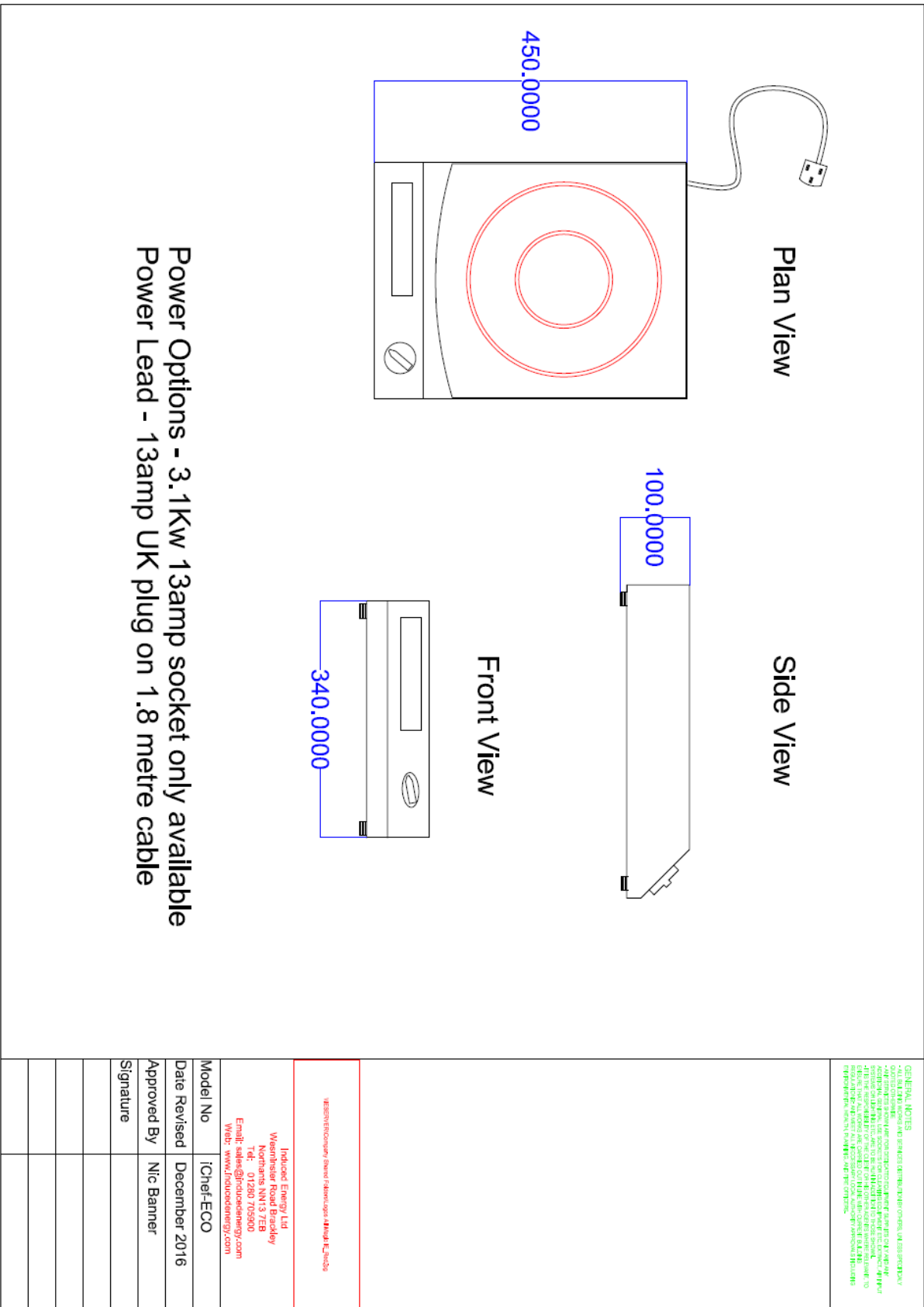
# Induced Energy iChef-ECO Single Zone Table Top



## Product Specification

<b>Maximum Power</b>	3.0KW
<b>Electrical Supply</b>	220V to 265V AC 50Hz and 60Hz 13 amp single phase supply
<b>Cord &amp; Plug</b>	Cord length 1.8m Moulded 13-amp plug fitted (UK) Appropriate plug for each export market
<b>Weight</b>	10.5kg
<b>Dimensions (mm)</b>	340 x 450 x 100mm
<b>Construction</b>	Ceran top, all stainless steel case
<b>Depth of Field</b>	Up to 30mm
<b>Safety Features</b>	Pan detection; boil-dry protection; over heat prevention and clean filter warning
<b>User Interface</b>	Display panel: Clean filter warning; No pan present warning; Glass hot warning; Shutdown.
<b>Controls</b>	Ergonomically designed knob with precise settings of 1 through to 99. Rear rocker mains on/off switch.
<b>Cooling Clearance</b>	Front only required.
<b>Bespoke Options</b>	Ceran top design – minimum quantity 50
<b>Warranty</b>	2 years parts and labour, excluding case and Ceran top
<b>CE</b>	Approved

Induced Energy Limited operates a continuous programme of product development and improvement.  
.Product specifications may therefore be subject to change.



Distributor:  
 KiD Catering Equipment, Oaktree Court Business Centre, Mill Lane, Ness, Cheshire, CH64 8TP  
 Tel: 0333 123 2450 sales@kidcateringequipment.com