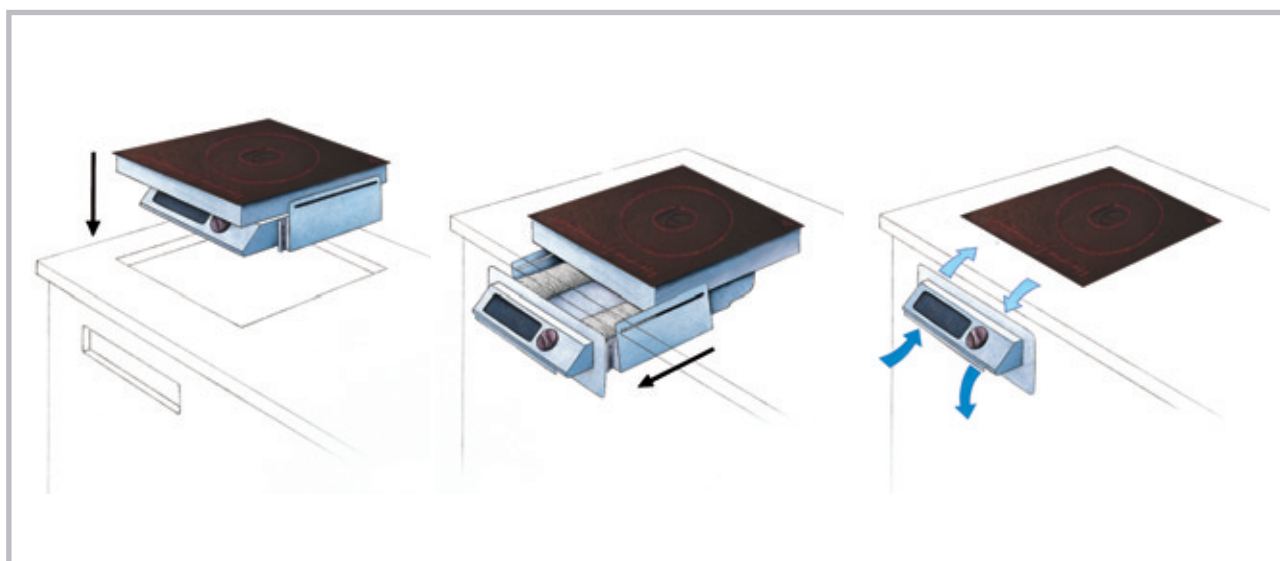


CS3000D 3kW Drop-in Induction Hob Model CS3000DF (flush-mounted, rebated aperture) Product Specifications



Maximum Power	3.0kW
Electrical Supply	230V AC 50HZ 13-amp single phase supply
Cord & Plug	Cord length 1.8m Moulded 13-amp plug fitted (UK) Appropriate plug for each export market
Weight	10kg
Dimensions (mm)	Drop-in case; W: 395 L: 395 H: 170 Ceran footprint nominal: 400 x 400 Ventilation drawer extension: 220 Front control panel aperture: 350 x 90 Counter aperture: 370 x 370 Rebate depth: 9
Construction	Ceran top, aluminium casing, stainless steel control panel
Depth of Field	Up to 30mm
Safety Features	Pan detection; boil-dry protection; overheat prevention; clean filter warning
User Interface	Display panel: Clean filter warning; No Pan Present warning; Glass hot warning; Shutdown
Controls	Ergonomically designed knob with precise settings of 1 through 99
Installation	Installation instructions provided, with acrylic template guide for control panel aperture
Cooling Clearance	The unique drawer concept includes integral ventilation ducts, providing effective front-to-front ventilation and cooling
Bespoke Options	Ceran top design - minimum quantity 50
Warranty	2 years parts and labour, excluding case, Ceran top and rear light source
CE	Approved

Induced Energy Limited operates a continuous programme of product development and improvement. Product specifications may therefore be subject to change.