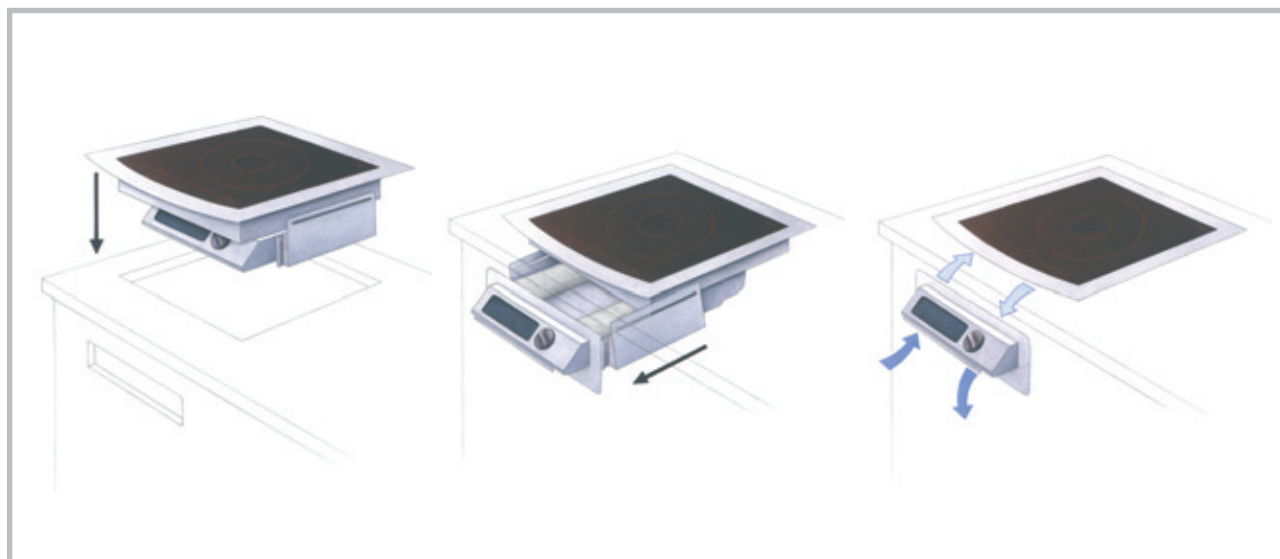


## CS3000D 3kW Drop-in Induction Hob Model CS3000DB (fitted bezel, square-cut aperture) Product Specifications



<b>Maximum Power</b>	3.0kW
<b>Electrical Supply</b>	230V AC 50HZ 13-amp single phase supply
<b>Cord &amp; Plug</b>	Cord length 1.8m Moulded 13-amp plug fitted (UK) Appropriate plug for each export market
<b>Weight</b>	10kg
<b>Dimensions (mm)</b>	Drop-in case; W: 395 L: 395 H: 170 Ceran footprint nominal: 400 x 400 Ventilation drawer extension: 220 Front control panel aperture: 350 x 90 Counter aperture: 440 x 440 Stainless bezel: 480 x 480
<b>Construction</b>	Ceran top, aluminium casing, stainless steel control panel
<b>Depth of Field</b>	Up to 30mm
<b>Safety Features</b>	Pan detection; boil-dry protection; overheat prevention; clean filter warning
<b>User Interface</b>	Display panel: Clean filter warning; No Pan Present warning; Glass hot warning; Shutdown
<b>Controls</b>	Ergonomically designed knob with precise settings of 1 through 99
<b>Installation</b>	Installation instructions provided, with acrylic template guide for control panel aperture
<b>Cooling Clearance</b>	The unique drawer concept includes integral ventilation ducts, providing effective front-to-front ventilation and cooling
<b>Bespoke Options</b>	Ceran top design - minimum quantity 50
<b>Warranty</b>	2 years parts and labour, excluding case, Ceran top and rear light source
<b>CE</b>	Approved

*Induced Energy Limited operates a continuous programme of product development and improvement.  
Product specifications may therefore be subject to change.*