



Dimensions and weights			
Width			
Including packaging	[mm]	580	
Excluding packaging	[mm]	515	
Depth			
Including packaging	[mm]	910	
Excluding packaging	[mm]	777	
Height			
Including packaging	[mm]	830	
Excluding packaging	[mm]	627	
Weight			
Including packaging	[kg]	67	
Excluding packaging	[kg]	54	
Safety clearances			
Rear	[mm]	50	
Right	[mm]	50	
Left (larger gap recommended for servicing)	[mm]	50	
Top (for ventilation)	[mm]	500	

Height with easyTOUCH panel
Appliances with an easyTOUCH panel are 20 mm higher than the specified value.

Electrical connected load ratings			
3N~ 400V 50/60Hz (3/N/PE)			
Rated power consumption	[kW]	7,1	
Convection power	[kW]	6,8	
Motor power	[kW]	0,25	
Rated current	[A]	14,8	
Fuse	[A]	16	
Recommended conductor cross-section for wires laid uncovered in air up to 5 m in length.	[mm ²]	5G2.5	
3~ 230V 50/60Hz (3/PE)			
Rated power consumption	[kW]	7,1	
Convection power	[kW]	6,8	
Motor power	[kW]	0,25	
Rated current	[A]	28,5	
Fuse	[A]	35	
Recommended conductor cross-section for wires laid uncovered in air up to 5 m in length.	[mm ²]	4G4	
3~ 200V 50/60Hz (3/PE)			
Rated power consumption	[kW]	7,1	
Convection power	[kW]	6,8	
Motor power	[kW]	0,25	
Rated current	[A]	21,1	
Fuse	[A]	25	
Recommended conductor cross-section for wires laid uncovered in air up to 5 m in length.	[mm ²]	4G4	

Heat output			
Heat output			
Latent heat	[kJ/h]	1330	(0.37 kW)
Sensible heat	[kJ/h]	1450	(0.40 kW)

Water connection			
Water supply (cold only)			
Shut-off device		With EA (verifiable) check valve and dirt filter	

Water connection			
Water supply			
Without CONVOClean system		2 x G 3/4", permanent connection recommended	
With CONVOClean system			
Flow pressure			
Without CONVOClean system	[kPa]	200 - 600	(2 - 6 bar)
With CONVOClean system	[kPa]	300 - 600	(3 - 6 bar)
Water drain			
drain version		permanent connection (recommended) or funnel waste trap	
Type	DN	40	

Water quality			
water quality for general use		drinking water quality (install water treatment unit if necessary)	
Hardness for injection			
German degrees of hardness (general hardness: GH)	[°dH]	4 - 7	
French degrees of hardness	[TH]	7 - 13	
English degrees of hardness	[°e]	5 - 9	
International	[ppm]	70 - 125	
Chemical	[mmol/l]	0,7 - 1,3	
Hardness for condenser, cleaning			
German degrees of hardness (general hardness: GH)	[°dH]	4 - 20	
French degrees of hardness	[TH]	7 - 35	
English degrees of hardness	[°e]	5 - 25	
International	[ppm]	70 - 360	
Chemical	[mmol/l]	0,7 - 3,6	
Properties			
temperature (T)	[°C]	max. 40	
conductivity	[µS/cm]	min. 20	
pH		6,5 - 8,5	
Cl ⁻	[mg/l]	max. 100	
SO ₄ ²⁻	[mg/l]	max. 150	
Fe	[mg/l]	max. 0.1	
Carbonate hardness (KH)	[°dH]	Low GH	

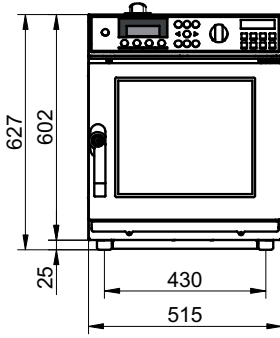
Maximum permissible loading weight			
GN (containers, shelf-grills, baking trays)			
Per combi steamer	[kg]	20	
Per shelf	[kg]	5	

Capacity			
Quantity			
GN 1/1 depth 40 mm	[Qty]	6	
GN 1/1 depth 65 mm	[Qty]	4	
Plate up to Ø 26 cm	[Qty]	8	

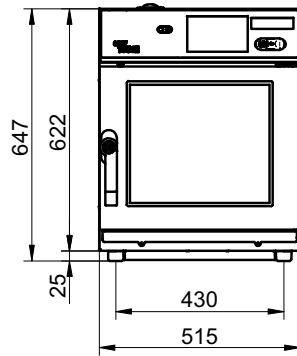
Appliance technical standards			
Degree of protection		IPX4	
Approval mark according to national regulations		TÜV/GS, DIN GOST TÜV, SVGW	
Noise emission			
Measured	[dBA]	max. 60	



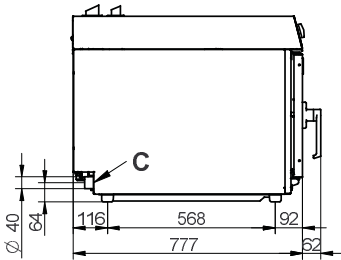
Appliance with standard controls



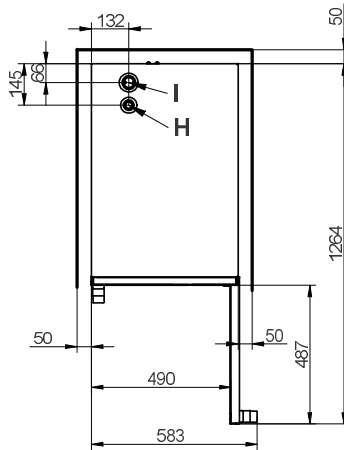
Appliance with easyTOUCH controls



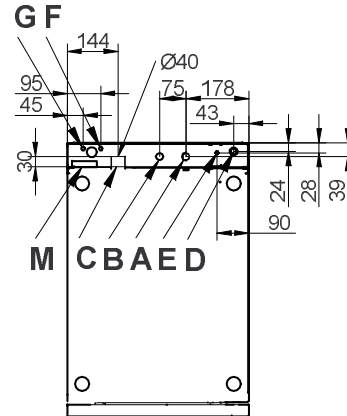
Side view



View from above with wall clearances



Connections on the underside



Meaning of labeled elements

A	Water connection Soft water G3/4"	E	Equipotential bonding	H	Air vent
B	Water connection Cold water G3/4"	F	Nozzle detergent connection (Neutralizer)	I	Ventilation port
C	Drain connection DN 40	G	Cleaning agent connection (Cleaner)	M	Overflow 60 x 20
D	Electrical supply				

